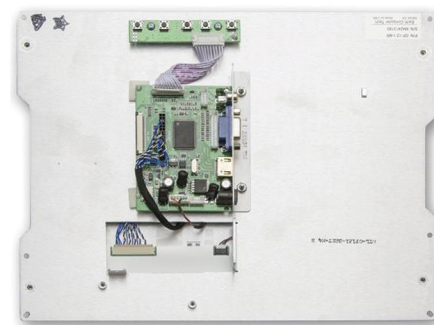


## OF-12.1-M5

**Open Frame LCD Monitors are the easiest way to integrate (or upgrade) a state of the art TFT LCD Monitor into your project.**

**The unit comes completely assembled with a color TFT LCD, controller board (HDMI, VGA and NTSC/PAL video inputs), on-system display button board, backlight driver board, integrated with a sheet metal bracket and is ready for installation.**

**Earth Computer Technologies, Inc is a maker of industrial LCDs and embedded products including the award winning ezLCD technology from EarthLCD, the recognized leader in smart touch LCDs.**



## 12.1" Open Frame LCD Monitor

**Commercial and industrial applications include: ATM machines, industrial equipment, instrumentation, kiosks, military, medical, arcade games, marine, security, test equipment, gaming, or any application requiring a color LCD display providing a VGA image.**

### Features:

- 12.1" XGA LCD panel with LED backlight
- HDMI, VGA and NTSC/PAL video inputs
- Commercial and industrial applications
- -30°C ~ +80°C operating temperature range
- High contrast ratio: 700:1 typical
- 500 cd/m2 Brightness typical
- 20,000 hours LED life typical
- OSD Controls: contrast, phase, clock, color, H&V position, auto-tune, recall
- +12 volt power

### Options (sold separately):

- AC/DC 12V power adapter, universal 100-240 volts
- Combo USB or RS232 four wire resistive touchscreen
- HDMI or VGA Cable

### Product Specifications:

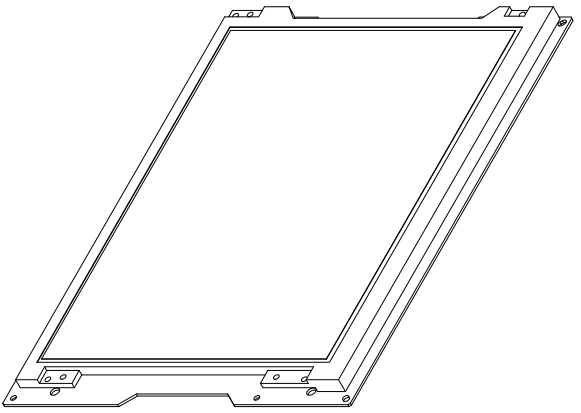
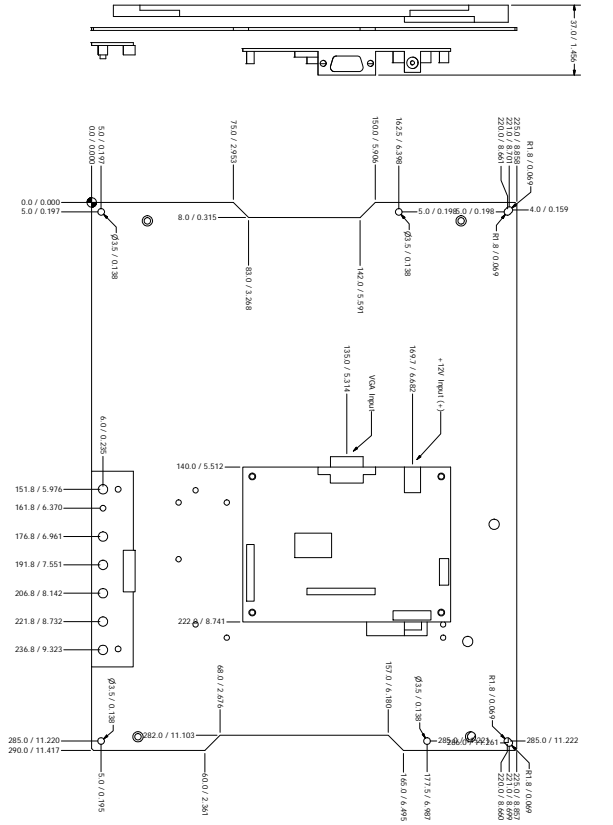
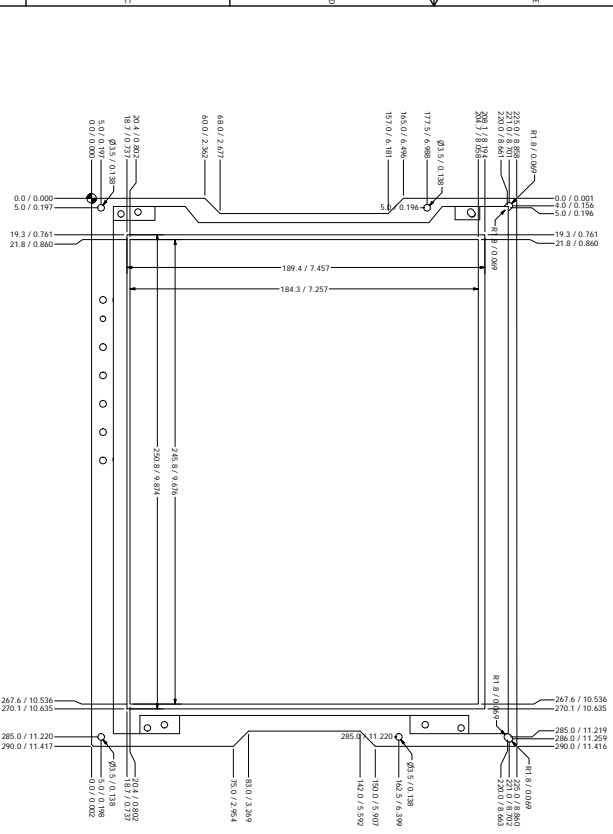
- Screen Size (Diagonal): 12.1"**
- Display Technology: TFT**
- Resolution: 1024 x 768 (XGA)**
- Brightness: 500 Nits**
- Interface Input Modes: VGA**
- Colors: 262,144**
- Active Area (mm): 245.76 x 184.32**
- Contrast Ratio: 700:1**
- Horizontal Viewing Angle: 80° L/R**
- Vertical Viewing Angle: 80° U/D**
- Operating Temperature: -30°C to 80°C**
- Storage Temperature: -30°C to 80°C**
- Input Voltage: +12V DC**
- Power Consumption: 950 mA**
- Display Backlight: LED**
- RoHS Compliant: Yes**
- Outline Dimensions (mm): 272 x 209**
- Outline Dimensions (in): 10.71 x 8.22**
- Cable Sold Separately**
- Touch Screen Available: Yes**
- Industrial Enclosure Available: Yes**

LCD Manufacturer AUO - G121XN01  
 LCD Type Grade A Industrial TFT LCD Panel  
 Panel Size 12.1" diagonal  
 Display Area 245.76 x 184.32 mm (HxV)  
 Max Resolution 1024x768  
 Brightness 500 cd/m<sup>2</sup> (Typical)  
 Color Support 262K  
 Viewing Angle  
 Horizontal LR 90°  
 Vertical 77/80°

Contrast Ratio 700 : 1 (Typical)  
 Pixel Pitch 0.3075 x 0.3075 mm  
 OSD Control Yes  
 LCD Lifetime 50,000 hrs  
 LCD M101  
 Mechanical  
 Weight 2 lbs

Signal Input Analog RGB  
 Input Video Signal D-Sub 15 pin VGA analog  
 Input Connector  
 Power +12V DC  
 Power Consumption Max. 11.4 Watts

Environmental  
 Operation -30° to 80° C Degree  
 Storage -30° to 80° C Degree  
 Relative Humidity 5-90%, non-condensing



Dimensions are in mm/inches

REVISION	DATE	DESCRIPTION
1	11/16/2010	Equip Computer Technology, Inc
2		
3		
4		
5		
6		
7		
8		
9		
10		
11		
12		
13		
14		
15		
16		
17		
18		
19		
20		
21		
22		
23		
24		
25		
26		
27		
28		
29		
30		
31		
32		
33		
34		
35		
36		
37		
38		
39		
40		
41		
42		
43		
44		
45		
46		
47		
48		
49		
50		
51		
52		
53		
54		
55		
56		
57		
58		
59		
60		
61		
62		
63		
64		
65		
66		
67		
68		
69		
70		
71		
72		
73		
74		
75		
76		
77		
78		
79		
80		
81		
82		
83		
84		
85		
86		
87		
88		
89		
90		
91		
92		
93		
94		
95		
96		
97		
98		
99		
100		