

1 Products affected

Product hierarchy no. *				Part no.	SBU	Type / Description	Customer part no.
SBU	PG	PGU	Type				
02	006	016	0000001545	See list below	Power Entry Modules with Filters	DD12	

*SBU (2-digit) / PG (3-digit) / PGU (3-digit) / Type (10-digit)

List of part numbers affected				
DD12.1111.111	DD12.1121.111	DD12.1321.111	DD12.2111.111	DD12.2121.111
DD12.2123.111	DD12.2124.111	DD12.2321.111	DD12.2324.111	DD12.4111.111
DD12.4121.111	DD12.4321.111	DD12.4324.111	DD12.4622.111	DD12.6111.111
DD12.6121.111	DD12.6123.111	DD12.6321.111	DD12.6324.111	DD12.8111.111
DD12.8121.111	DD12.8321.111	DD12.9111.111	DD12.9121.111	DD12.9321.111
DD12.9324.111				

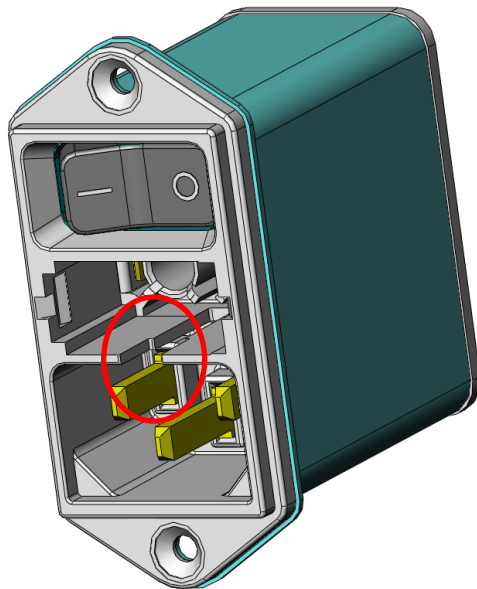
2 Type of change

Enlarging of the fusedrawer slot.

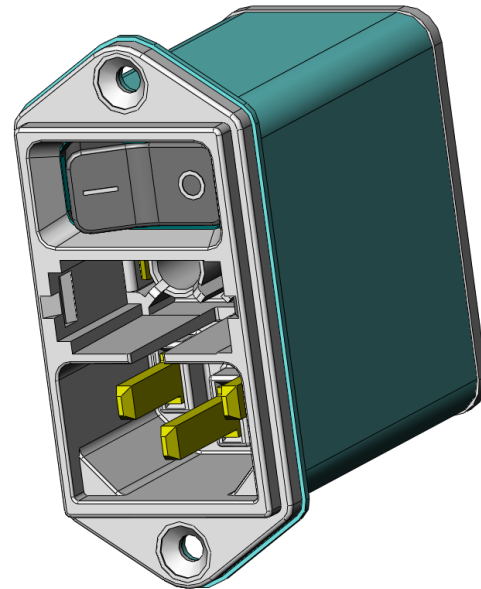
3 Detailed description of change

Fusedrawer slot enlarged.

New



Old



DD12					0118.2186	
creation date	created by	release date	released by	notification no.	revision	page
2013-10-04	hollenpe	2013-12-04	hollenpe	25286	-	1 of 2

4 Reason of change

Implementation of V-Lock cord retention function.
 Precondition: new fusedrawer required (see PCN 0118.2133).

5 Release date

The change will be rolled-out individually by all part numbers affected starting ww 02/2014 and last approx. 9 months.

6 Impact of change and recommended action

Form: New form is fully backwards compatible (can be used with old fusedrawer, see PCN 0118.2133).
 Fit: n/a
 Function: The new expanded slot allows applying V-Lock cord sets for cord retaining (new fuse drawer necessary).
 Production Site: n/a
 Product Label: n/a

7 Reference Documents / Attachments

Kind of document	Document number	Remarks
PCN fusedrawer 2	0118.2133	
Data sheet Fusedrawer 2		
Data sheet DD12		

DD12					0118.2186	
creation date	created by	release date	released by	notification no.	revision	page
2013-10-04	hollenpe	2013-12-04	hollenpe	25286	-	2 of 2